

Description

GM2576HV series is designed to provide all the active function for a step-down (buck) switching regulator, and drives a maximum load current as high as 3A line and load regulations. GM2576HV is available in fixed output voltages of 3.3V, 5V, and a versatile Adjustable output version.

These regulators are simple to use and require minimum number of external components. The features include internal frequency compensation and a fixed-frequency oscillator.

The GM2576HV is high-efficiency replacements for popular three-terminal linear regulators, and is requiring a smaller heat sink or even no need heat sink.

GM2576HV performs well with standard inductors from most of manufacturers, and simplifying the design of switch-mode power supplies. External shutdown is included with 80 μ A (typical) standby current. The output switch has cycle-by-cycle current limiting as well as thermal shutdown for full protection under fault conditions.

GM2576HV operates at a switching frequency of 52 kHz which allowing smaller size filter components than what would be needed with lower frequency switching regulators.

GM2576HV series are available in a standard 8 lead SO package with heat sink

Features

- ◆ Standard ESOP8 package is available
- ◆ 3.3V, 5V, and Adjustable output versions
- ◆ Adjustable version output voltage range 1.23V to 57V
- ◆ Input voltage range up to 60V
- ◆ Requires only 4 external components with High efficiency
- ◆ TTL shutdown capability, low power standby mode
- ◆ Built-in thermal shutdown, current limit protection
- ◆ Uses standard inductors
- ◆ 52 kHz fixed frequency internal oscillator

Application

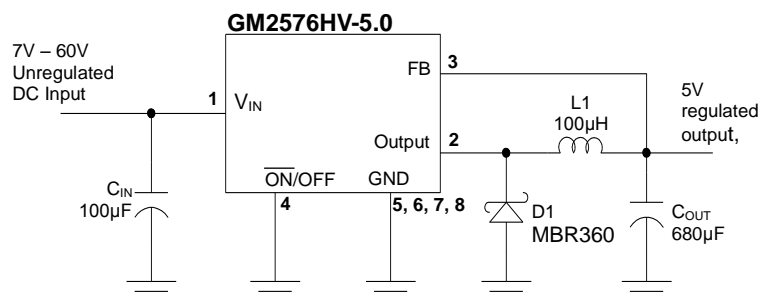
Pre-regulator for linear regulators

On-card/board switching regulators

High-efficiency step-down buck regulator

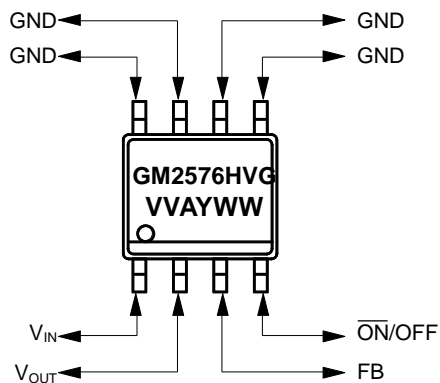
Positive to negative converter (buck-boost)

Typical Application Circuits



Marking Information and Pin Configurations (Top View)

ESOP8



G: Green Product
 VV: 33=3.3V, 50=5.0V, A=ADJ
 A: Assembly/Testing factory code
 Y: Year
 WW: Week

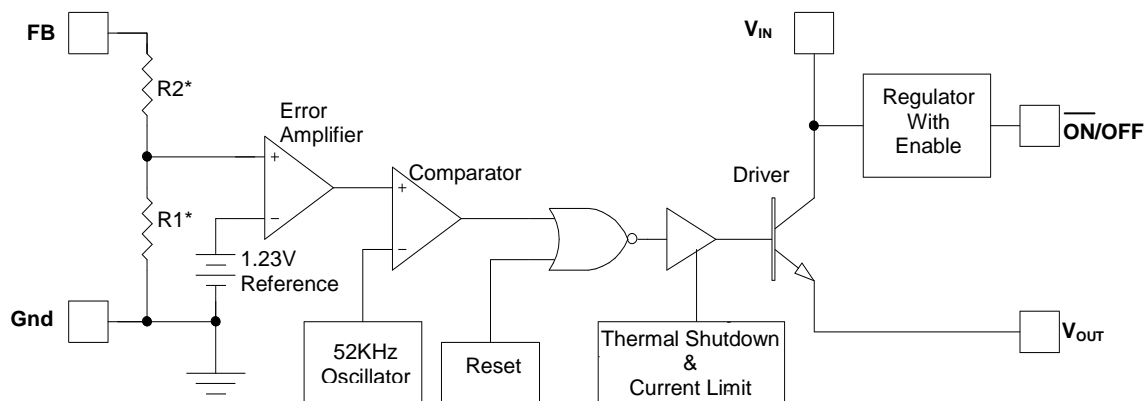
Ordering Information

Ordering Number	Output Voltage	Package	Shipping
GM2576HV-APS8RG	Adj	ESOP8	2500 Units / Reel
GM2576HV-3.3PS8RG	3.3	ESOP8	2500 Units / Reel
GM2576HV-5.0PS8RG	5.0	ESOP8	2500 Units / Reel

Absolute Maximum Ratings (Note 1)

Rating	Value	Unit
Maximum Supply Voltage	63	V
ON/OFF Pin Input Voltage / Feed Back Pin Voltage	-0.3 to $V_{IN} + 0.3$	V
Output Voltage to Ground (Steady State)	-0.75	V
Power Dissipation	Internally Limited	-
Thermal Resistance – Junction to Ambient (θ_{JA}) ** 2 square inch of FR-4, double sided, 1oz. minimum copper weight, is recommended	36	°C/W
Storage Temperature Range	- 65 to 150	°C
Maximum Junction Temperature	+ 150	°C
Operating Temperature Range	- 40 to 125	°C
Minimum EDS Rating (Note 2)	2	kV
Lead Temperature (Soldering, 10 sec)	+ 260	°C

Block Diagram



$V_{OUT} = 3.3V$, $R1 = 1K$, $R2 = 1.7K$
 $V_{OUT} = 5.0V$, $R1 = 1K$, $R2 = 3.1K$
 $V_{OUT} = ADJ$, $R1 = OPEN$, $R2 = 0\Omega$

Electrical Characteristics: GM2576HV-A

(Specifications with standard type face are for $T = 25^{\circ}\text{C}$, and those with bold face type apply over full Operating Temperature range)

Parameter	Condition	Symbol	Min	Typ	Max	Unit
Feedback Voltage	$V_{\text{IN}} = 12\text{V}$, $I_{\text{LOAD}} = 0.2\text{A}$, V_{OUT} is set to 5V	V_{FB}	1.217	1.230	1.243	V
	$8.0\text{V} \leq V_{\text{IN}} \leq 60\text{V}$, $0.2\text{A} \leq I_{\text{LOAD}} \leq 3\text{A}$, V_{OUT} is set to 5V		1.193	1.230	1.267	
			1.180		1.280	
Efficiency	$V_{\text{IN}} = 12\text{V}$, $I_{\text{LOAD}} = 3.0\text{A}$, $V_{\text{OUT}} = 5\text{V}$	η		77		%

Electrical Characteristics: GM2576HV-3.3

(Specifications with standard type face are for $T = 25^{\circ}\text{C}$, and those with bold face type apply over full Operating Temperature range)

Parameter	Condition	Symbol	Min	Typ	Max	Unit
Output Voltage	V _{IN} = 12V, I _{LOAD} = 0.5A	V _{OUT}	3.234	3.300	3.366	V
	6.0V ≤ V _{IN} ≤ 60V, 0.2A ≤ I _{LOAD} ≤ 3A		3.168		3.432	
			3.135		3.465	
Efficiency	V _{IN} =12V, I _{LOAD} =3.0A,	η		75		%

Electrical Characteristics: GM2576HV-5.0

(Specifications with standard type face are for $T = 25^{\circ}\text{C}$, and those with bold face type apply over full Operating Temperature range)

Parameter	Condition	Symbol	Min	Typ	Max	Unit
Output Voltage	$V_{\text{IN}} = 12\text{V}, I_{\text{LOAD}} = 0.5\text{A}$	V_{OUT}	4.900	5.000	5.100	V
	$8.0\text{V} \leq V_{\text{IN}} \leq 60\text{V}, 0.2\text{A} \leq I_{\text{LOAD}} \leq 3\text{A}$		4.800		5.200	
			4.750		5.250	
Efficiency	$V_{\text{IN}} = 12\text{V}, I_{\text{LOAD}} = 3.0\text{A}$	η		77		%

Electrical Characteristics: All Output Voltage Versions

(Specifications with standard type face are for $T = 25^{\circ}\text{C}$, and those with bold type face apply over full Operating Temperature range, $V_{\text{IN}} = 12\text{V}$)

Parameter	Condition	Symbol	Min	Typ	Max	Unit
Feedback Bias Current	$V_{\text{OUT}} = 5\text{V}$ (Adjustable Version Only)	I_b	-	50	100 500	nA
Oscillator Frequency	(Note 3)	f_o	42	52	63	kHz
Saturation Voltage	$I_{\text{OUT}} = 3\text{A}$ (Notes 4, 5)	V_{SAT}	-	1.4	1.55 1.70	V
Max Duty Cycle (ON)	(Note 5)	DC	93	98	-	%
Current Limit	Peak Current (Notes 4, 5)	I_{CL}	4.2 3.5	5.8	6.9 7.5	A
Output Leakage Current	Output = 0V (Notes 4, 6)	I_L		7.5	2	mA
	Output = -0.75V (Notes 4, 6)		-		30	
Quiescent Current	(Note 6)	I_Q	-	5	10	mA
Standby Quiescent Current	ON/OFF Pin = 5V (OFF), $V_{\text{IN}} = 60\text{V}$	I_{STBY}	-	50	200	μA
ON/OFF Pin Logic Input Level	Low (ON)	V_{IH}	-	1.2	1.0 0.8	V
	High (OFF)	V_{IL}	2.2 2.4	1.4	-	
ON/OFF Pin Input Current	$V_{\text{LOGIC}} = 2.5\text{V}$ (OFF)	I_{H}		12	30	μA
	$V_{\text{LOGIC}} = 0.5\text{V}$ (ON)	I_{L}		0	10	

Note 1: Stresses greater than those listed under Maximum Ratings may cause permanent damage to the device. This is a stress rating only and functional operation of the device at these or any other conditions above those indicated in the operation is not implied. Exposure to absolute maximum rating conditions for extended periods may affect reliability.

Note 2: The human body model is a 100pF capacitor discharge through a 1.5K Ω resistor into each pin.

Note 3: External components such as the catch diode, inductor, input and output capacitors, and voltage programming resistors can affect switching regulator system performance. Where the GM2576HV is used as shown in Figure 1&2 test circuits.

Note 4: No diode, inductor or capacitor connected to output pin.

Note 5: Feedback pin removed from output and connected to 0V to force the output transistor switch ON.

Note 6: Feedback pin removed from output and connected to 12V for the 3.V, 5V and Adj version, to force the output transistor switch OFF.

Test Circuit and Layout Guidelines

Careful layout is important with any switching regulators. Rapidly switching currents associated with wiring inductance generate voltage transients which can cause problems. To minimize inductance and ground loops, the lengths of the leads indicated by heavy lines in Figure 1&2 below should be kept as short as possible. Single point grounding (as indicated) or ground plane construction should be used for best results. When using the Adjustable version, place the programming resistors as close as possible to GM2576HV, to keep the sensitive feedback wiring short.

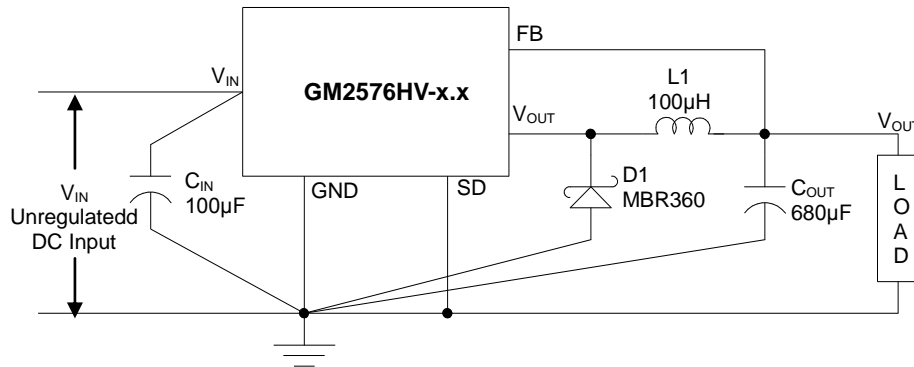


Figure 1 Fixed Output Voltage Versions

$C_{IN} = 100\mu F$, 75V Aluminum Electrolytic
 $C_{OUT} = 680\mu F$, 25V, Aluminum Electrolytic
 D1 = Schottky
 $L1 = 100\mu H$

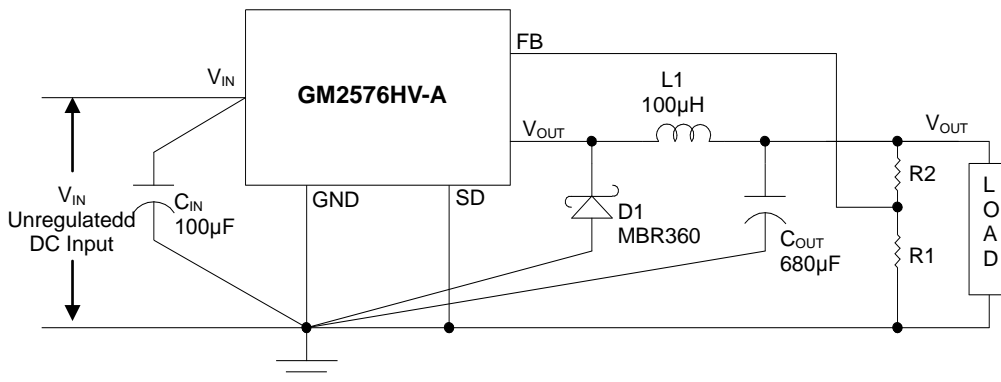


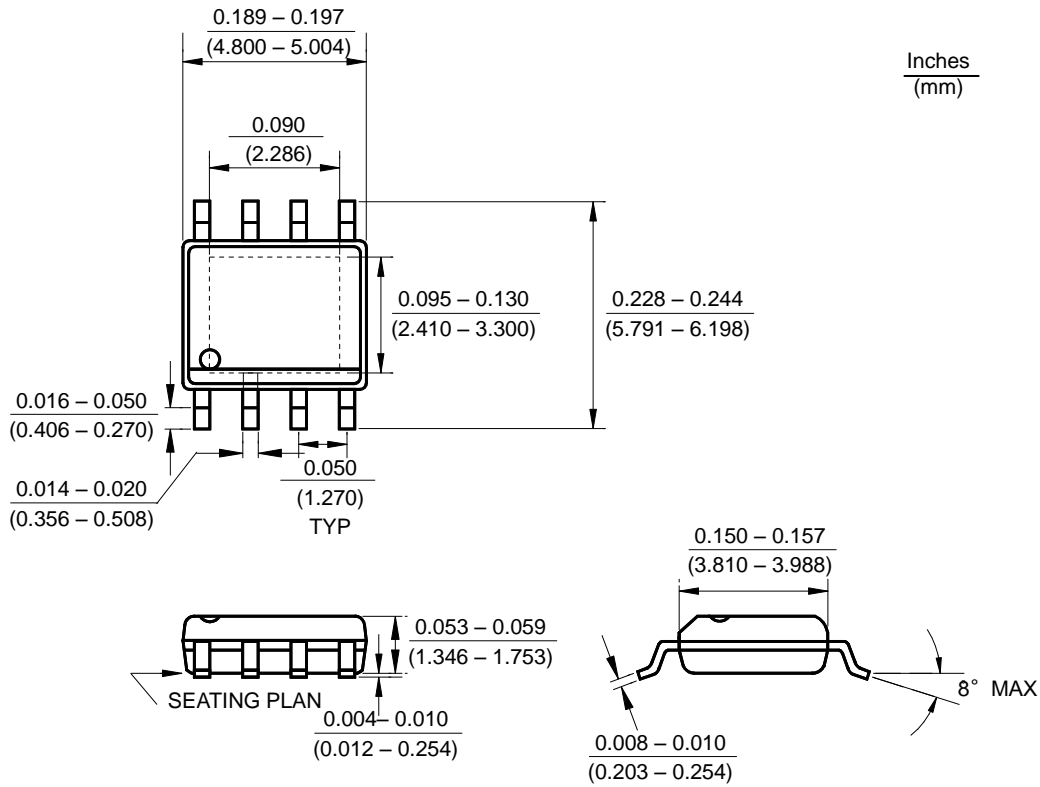
Figure 2 Adjustable Output Voltage Versions

$C_{IN} = 100\mu F$, 75V Aluminum Electrolytic
 $C_{OUT} = 680\mu F$, 25V, Aluminum Electrolytic
 D1 = Schottky
 $L1 = 100\mu H$

$$V_{OUT} = V_{REF} (1 + R2/R1)$$

where $V_{REF} = 1.23V$ and $R1$ is between 1K to 5K

Package Outline Dimensions – ESOP8





GAMMA
MICROELECTRONICS

GM2576HV

60V/3A STEP DOWN VOLTAGE
SWITCHING REGULATORS

Ordering Number

GM 2576HV A

PS8

R

G

APM
Gamma

Circuit Type

Output
Voltage

A: Adj
3.3 = 3.3V
5.0 = 5.0V

Package
Type

PS8: ESOP8

Shipping Type

R: Taping & Reel
T: Tube

G: Green Products

Note:

Green products:

- ◆ Lead-free (RoHS compliant)
- ◆ Halogen free(Br or Cl does not exceed 900ppm by weight in homogeneous material and total of Br and Cl does not exceed 1500ppm by weight)